



LAR PLASTICS
Sustainable Plastic Solutions

E-CATALOG

Heavy-Duty Commercial Products





THE COMPANY that TRANSFORMS

Set up to satisfy all market needs in terms of Waste Management, Plastic Containers and Product Palletizing, **LAR PLASTICS** offers an array of products from **Step-On Trash Cans, to Rollouts, Boxes and Plastic Pallets.**

Our Mission is to contribute to the community, the environment and our society by working with post-consumer and post-industrial materials from various industries transforming them into innovative products, contributing for a better future for our planet.





LAR PLASTICS

Sustainable Plastic Solutions

SUSTAINABILITY

Sustainability is at the heart of our purpose at LAR PLASTICS. Our products have a clear advantage in society and contribute positively to the NEW CIRCULAR ECONOMY.

We have invested heavily in embedding Circularity in all our products. All are designed to be easily re-purposed into new products through mechanical recycling, so that waste and leakage of plastic is significantly reduced out of the Circular Economy.

At LAR PLASTICS we embrace the common vision and framework presented by the Sustainable Packaging Coalition®.

Innovation and the Circular Economy

A sustainable world depends on a “Circular Economy” which is an alternative to the traditional “Take-Make-Dispose” system. Our goal is to eliminate waste at all stages of the product lifecycle by optimizing as much value as possible from resources and materials and then recovering and re-generating them at the end of their useful life.

At LAR PLASTICS we contribute to the Circular Economy with 95% of our product portfolio being made of 100% recyclable plastics. All our products are 100% recyclable, allowing valuable resources to be captured by mechanical recycling technologies.

We design products with circular capabilities that can easily become raw materials for the future and give our customers a safe, responsible and recyclable way to deliver a product to their consumers.

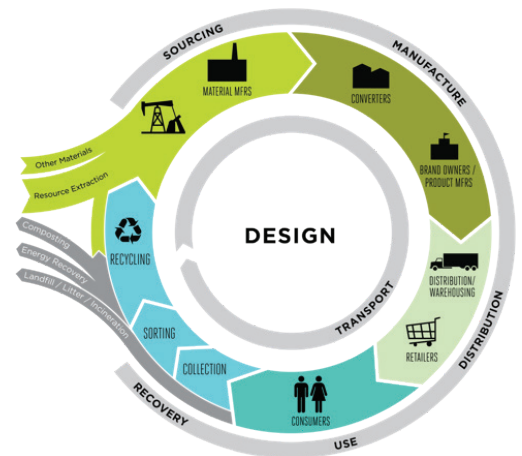
The Challenge

Transforming plastic waste into value-added products through technology, design and trash collection cooperatives, enabling our clients to participate in the new Circular Economy.

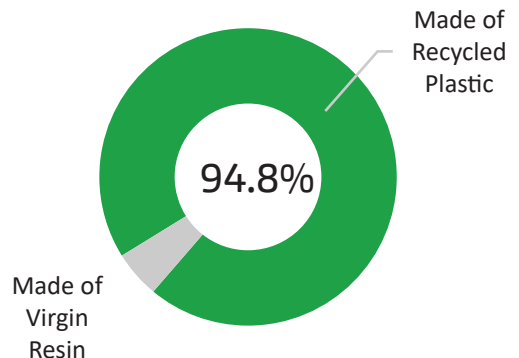
The Approach

Development of large-scale trash collection cooperatives, to transform waste - that commonly ends up in landfills - through research and development, product design and reverse logistics.

At LAR PLASTICS we are committed to deliver environmentally friendly Sustainable Plastic Solutions.



LAR PLASTICS Production Output



The Results

LAR PLASTICS has accelerated the Circular Economy by becoming an environmental agent capable of recycling difficult waste and turning it into **High-Performance Post-Consumer Resin (PCR)**.

At LAR PLASTICS, we are proud to be recognized as a preferred supplier of High-Performance PCR to leading companies such as **Coca-Cola, Dow Chemical, Anheuser-Busch InBev, Toyota and Braskem, among others.**

SMART PALLET



EcoSmart Pallet - US.1.o

Measurements:

Width: 39.7 in / 1000 mm
 Height: 5.9 in / 150 mm
 Length: 47.2 in / 1200 mm

Weight: 26.4 lbs / 12 kg

Capacity:

Static: Up to 6600 lbs / 3000 kg
 Dynamic: Up to 3300 lbs / 1500 kg

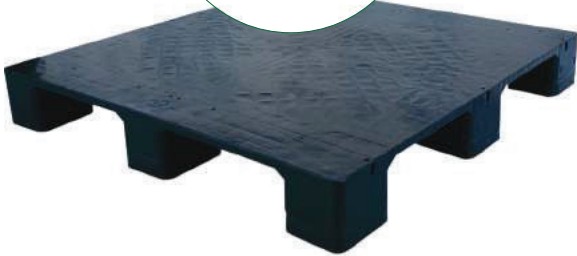
Material: HDPE or PP

Colors:



Bases with double reinforcement

Optional: Up to 3 steel reinforcements



EcoSmart Pallet - US.1.c

Measurements:

Width: 39.7 in / 1000 mm
 Height: 5.9 in / 150 mm
 Length: 47.2 in / 1200 mm

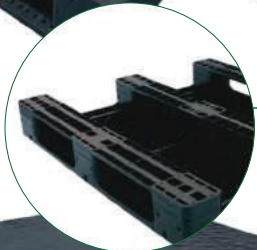
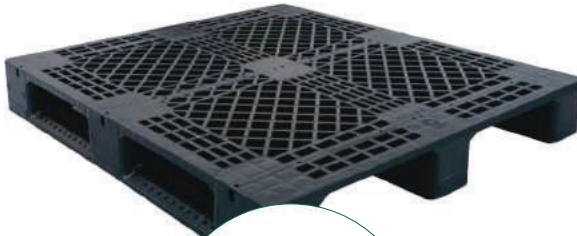
Weight: 28.6 lbs / 13 kg

Capacity:

Static: Up to 6600 lbs / 3000 kg
 Dynamic: Up to 3300 lbs / 1500 kg

Material: HDPE or PP

Colors:



EcoSmart Pallet - US.3.o

Measurements:

Width: 39.7 in / 1000 mm
 Height: 5.9 in / 150 mm
 Length: 47.2 in / 1200 mm

Weight: 29.7 lbs / 13.5 kg

Capacity:

Static: Up to 11000 lbs / 5000 kg
 Dynamic: Up to 3300 lbs / 1500 kg
 On Rack: Up to 1700 lbs / 800 kg

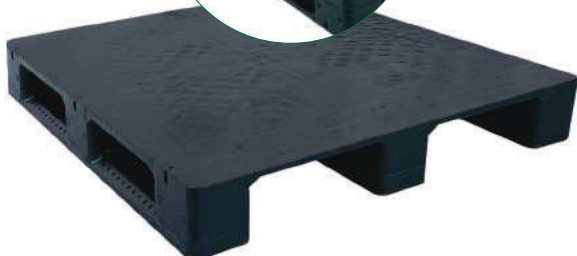
Material: HDPE or PP

Colors:



Smart Pallet with 3 runners

Optional: Up to 7 steel reinforcements



EcoSmart Pallet - US.3.c

Measurements:

Width: 39.7 in / 1000 mm
 Height: 5.9 in / 150 mm
 Length: 47.2 in / 1200 mm

Weight: 32.1 lbs / 14.6 kg

Capacity:

Static: Up to 15400 lbs / 3000 kg
 Dynamic: Up to 4400 lbs / 2000 kg
 On Rack: Up to 2200 lbs / 1000 kg

Material: HDPE or PP

Colors:



EcoSmart Pallet - US.6.o

Measurements:

Width: 39.7 in / 1000 mm
 Height: 5.9 in / 150 mm
 Length: 47.2 in / 1200 mm

Weight: 32.4 lbs / 14.6 kg

Capacity:

Static: Up to 15400 lbs / 7000 kg
 Dynamic: Up to 4400 lbs / 2000 kg
 On Rack: Up to 2200 lbs / 1000 kg

Material: HDPE or PP

Colors:



Smart Pallet with 6 runners

Optional: Up to 7 steel reinforcements

we deliver safety



PLASTIC PALLETS



EcoSmart Pallet - US.6.c

Measurements:

Width: 39.7 in / 1000mm
 Height: 5.9 in / 150mm
 Length: 47.2 in / 1200 mm

Capacity:

Static: Up to 16700 lbs / 7600 kg
 Dynamic: Up to 4400 lbs / 2000 kg
 On Rack: Up to 2200 lbs / 1000 kg

Colors:



Weight: 34.8 lbs / 15.8kg **Material:** HDPE or PP

Smart Pallets with 6 runners

Optional: Up to 7 steel reinforcements



Nest Pallet - US.N.o

Measurements:

Width: 39.7 in / 1000 mm
 Height: 5.9 in / 150 mm
 Length: 47.2 in / 1200 mm

Capacity:

Static: Up to 6600 lbs / 3000 kg
 Dynamic: Up to 2600 lbs / 1200 kg

Colors:



Weight: 18.7 lbs / 8.5kg **Material:** HDPE or PP



Heavy Duty Pallet - US.H3.o

Measurements:

Width: 39.7 in / 1000 mm
 Height: 6.2 in / 160 mm
 Length: 47.2 in / 1200 mm

Capacity:

Static: Up to 17600 lbs / 8000 kg
 Dynamic: Up to 5500 lbs / 2500 kg
 On Rack: Up to 2600 lbs / 1200 kg

Colors:



Weight: 44 lbs / 20 kg **Material:** HDPE or PP



Extra Duty Pallet - US.M3.o

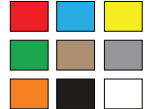
Measurements:

Width: 39.7 in / 1000 mm
 Height: 6.6 in / 170 mm
 Length: 47.2 in / 1200 mm

Capacity:

Static: Up to 17600 lbs / 8000 kg
 Dynamic: Up to 5500 lbs / 2500 kg
 On Rack: Up to 3300 lbs / 1500 kg

Colors:



Weight: 41.4 lbs / 18.8 kg **Material:** HDPE or PP



Extra Duty Pallet - US.M3.c

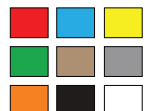
Measurements:

Width: 39.7 in / 1000 mm
 Height: 6.6 in / 170 mm
 Length: 47.2 in / 1200 mm

Capacity:

Static: Up to 15400 lbs / 7000 kg
 Dynamic: Up to 5500 lbs / 2500 kg
 On Rack: Up to 3300 lbs / 1500 kg

Colors:



Weight: 44 lbs / 20 kg **Material:** HDPE or PP

we deliver affordability

SPILL CONTAINMENT PALLETS (SCP)



SCP IBC 264G.1000L - 4 Drums

Measurements:

Width: 78.7 in / 2000 mm
 Height: 25.5 in / 650 mm
 Length: 59.0 in / 1500 mm

Capacity:

Load: 2800 lbs / 1300 kg
 Sump: Up to 264 lbs / 1000 kg

Weight: 220.5 lbs / 100 kg

Material: HDPE or MDPE

Colors:   



SCP 112G.420L - 4 Drums

Measurements:

Width: 51.5 in / 1310 mm
 Height: 17.5 in / 445 mm
 Length: 51.5 in / 1310 mm

Capacity:

Load: 2600 lbs / 1200 kg
 Sump: 110G / 420L

Weight: 99.2 lbs / 45 kg

Material: HDPE or MDPE

Colors:   



SCP 40G.150L - 4 Drums

Measurements:

Width: 53.5 in / 1360 mm
 Height: 8.2 in / 210 mm
 Length: 79.9 in / 2030 mm with ramp
 Length: 53.5 in / 1360 mm w/o ramp

Capacity:

Load (pallet): 2600 lbs / 1200 kg
 Load (ramp): 660 lbs / 300 kg
 Sump: 39 G / 150 L

Weight: with ramp: 92.5 lbs / 42 kg

Material: HDPE or MDPE

Weight: w/o ramp: 59.5 lbs / 42 kg

Colors:   



SCP 67G.255L - 2 Drums

Measurements:

Width: 26.5 in / 675 mm
 Height: 17.5 in / 445 mm
 Length: 52.5 in / 1335 mm

Capacity:

Load: 1300 lbs / 600 kg
 Sump: 67 G / 255 L

Weight: 55.1 lbs / 25 kg

Material: HDPE or MDPE

Colors:   



SCP 20G.75L - 2 Drums

Measurements:

Width: 25.9 in / 660 mm
 Height: 8.6 in / 220 mm
 Length: 44.5 in / 1132 mm

Capacity:

Load: 1300 lbs / 600 kg
 Sump: 20 G / 75 L

Weight: 33.0 lbs / 15 kg

Material: HDPE or MDPE

Colors:   



SCP IBC 26G.100L - 1 Drum

Measurements:

Width: 34.0 in / 865 mm
 Height: 10.6 in / 270 mm
 Length: 34 in / 865 mm

Capacity:

Load: 550 lbs / 250 kg
 Sump: 26G / 100 L

Weight: 33 lbs / 15 kg

Material: HDPE or MDPE

Colors:   

we deliver savings



DISPLAY BASES AND INTERLOCKING



Smart display base 1210.o

Measurements:
Width: 39.3 in / 1000 mm
Height: 4.1 in / 105 mm
Length: 47.2 in / 1200 mm

Capacity:
Static: Up to 4400 lbs / 2000 kg
Weight: 17.6 lbs / 8 kg
Material: HDPE or PP

Colors:
■ □
+Virgin



Smart display base 1210.c

Measurements:
Width: 39.3 in / 1000 mm
Height: 4.1 in / 105 mm
Length: 47.2 in / 1200 mm

Capacity:
Static: Up to 4400 lbs / 2000 kg
Weight: 20.0 lbs / 9.1 kg
Material: HDPE or PP

Colors:
■ □
+Virgin



Interlocking 16.32

Measurements:
Width: 39.3 in / 1000 mm
Height: 4.1 in / 105 mm
Length: 47.2 in / 1200 mm

Capacity:
4400 lbs/m² - 10 Ton/m²
Weight: 6.6 lbs / 3kg
Material: HDPE or PP

Colors:
■ □ ■
+Virgin



Interlocking 16.32

* with extender

Measurements:
Width: 16.1 in / 410 mm
Height: 9.4 in / 238 mm
Length: 32.2 in / 820 mm

Capacity:
4400 lbs/m² - 10 Ton/m²
Weight: 9.2 lbs / 4.2 kg
Material: HDPE or PP

Colors:
■ □ ■
+Virgin

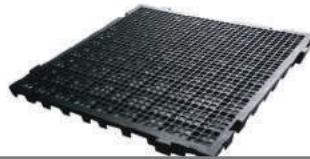


Interlocking 20.10

Measurements:
Width: 9.8 in / 250 mm
Height: 0.9 in / 25 mm
Length: 19.6 in / 500 mm

Capacity:
22000 lbs/m² - 10 Ton/m²
Weight: 0.8 lbs / 0.4 kg
Material: HDPE or PP

Colors:
■ □ ■
+Virgin

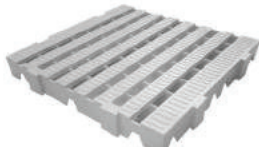


Interlocking 20.20

Measurements:
Width: 19.6 in / 500 mm
Height: 1.1 in / 30 mm
Length: 19.6 in / 500 mm

Capacity:
22000 lbs/m² - 10 Ton/m²
Weight: 1.7 lbs / 0.8 kg
Material: HDPE or PP

Colors:
■ □ ■
+Virgin



Interlocking 16.16

Measurements:
Width: 15.7 in / 400 mm
Height: 1.7 in / 45 mm
Length: 15.7 in / 400 mm

Capacity:
44000 lbs/m²
10 Ton/m²

Weight: 1.7 lbs / 0.8 kg
Material: HDPE or PP

Colors:
■ □ ■
+Virgin



Interlocking 16.16.Heavy Duty

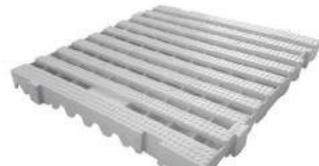
* with extender

Measurements:
Width: 15.7 in / 400 mm
Height: 5.1 in / 130 mm
Length: 15.7 in / 400 mm

Capacity:
4400 lbs/m²
2 Ton/m²

Weight: 2.8 lbs / 1.3 kg
Material: HDPE or PP

Colors:
■ □ ■
+Virgin



Interlocking 20.20.Heavy Duty

Measurements:
Width: 19.6 in / 500 mm
Height: 1.9 in / 50 mm
Length: 19.6 in / 500 mm

Capacity:
44000 lbs/m²
20 Ton/m²

Weight: 3.3 lbs / 1.5 kg
Material: HDPE or PP

Colors:
■ □ ■
+Virgin

we deliver convenience

CUBE TRUCK (CT)



CT 156G.600L - with Wheels

Measurements:

Width: 30.7 in / 780 mm
 Height: 36.0 in / 915 mm
 Length: 56.6 in / 1440 mm

Weight: 82.6 lbs / 37.5 kg

Colors:



CT 156G.600L - with Cart

Measurements:

Width: 32.6 in / 830 mm
 Height: 40.9 in / 1040 mm
 Length: 62.2 in / 1580 mm

Weight: 101 lbs / 45.8 kg

Colors:



CT 114G.430L - with Wheels

Measurements:

Width: 32.6 in / 830 mm
 Height: 40.4 in / 1028 mm
 Length: 46.4 in / 1180 mm

Weight: 78.4 lbs / 35.6 kg

Colors:



CT 114G.430L - with Cart

Measurements:

Width: 33.6 in / 855 mm
 Height: 41.5 in / 1055 mm
 Length: 46.4 in / 1180 mm

Weight: 55.1 lbs / 25.0 kg

Colors:



CT 48G.180L - with Cart

Measurements:

Width: 33.6 in / 855 mm
 Height: 41.5 in / 1055 mm
 Length: 46.4 in / 1180 mm

Weight: 55.1 lbs / 25.0 kg

Colors:



RECYCLING COLLECTION STATION



Measurements:

Width: 36.6 in / 930 mm
 Height (with base): 72.2 in / 1835 mm
 Height (with base + ring): 78.9 in / 2005 mm
 Length: 73.2 in / 1860 mm

Weight: 253.5 lbs / 115 kg

Colors:



we deliver **quality**



MOBILE DUMPSTER



Dumpster 264G.1000L - Hinged Lid

Measurements:

Width: 41.8 in / 1063 mm

Height: 50.1 in / 1275 mm

Length: 55.1 in / 1400 mm

Weight: 121.3 lbs / 55 kg

Capacity: 992.1 lbs / 450 kg

Colors:



Dumpster 264G.1000L - with or without Step-On

Measurements (w/o Step On):

41.8 x 50.1 x 55.1 in

1063 x 1275 x 1400 mm

Weight: 114.6 lbs / 52 kg

Capacity: 992.1 lbs / 450 kg

Measurements (with Step On):

47.4 x 50.1 x 55.1 in

1206 x 1275 x 1400 mm

Weight: 126.8 lbs / 57.5 kg

Capacity: 992.1 lbs / 450 kg

Colors:



Dumpster 185G.700L - with or without Step-On

Measurements (w/o Step On):

27.9 x 43.7 x 54.3 in

710 x 1112 x 1380 mm

Weight: 63.9 lbs / 29 kg

Capacity: 551.2 lbs / 250 kg

Measurements (with Step On):

33.6 x 43.7 x 54.3 in

855 x 1112 x 1380 mm

Weight: 73.1 lbs / 33.2 kg

Capacity: 551.2 lbs / 250 kg

Colors:



Dumpster 110G.500L - with or without Step-On

Measurements (w/o Step On):

31.6 x 47.8 x 55.1 in

803 x 1215 x 1400 mm

Weight: 92.5 lbs / 42 kg

Capacity: 760.6 lbs / 345 kg

Measurements (with Step On):

37.4 x 47.8 x 55.1 in

952 x 1215 x 1400 mm

Weight: 103.6 lbs / 47 kg

Capacity: 760.6 lbs / 345 kg

Colors:



we deliver versatility

ROLLOUTS CARTS



Roll Out 32G.120L

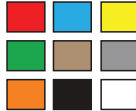
Measurements:

Width: 18 in / 460 mm
 Height: 37 in / 940 mm
 Length: 21.6 in / 550 mm
Capacity: 128 lbs / 58 kg

Diameter (wheels):

7.8in / 200mm
Weight w/ Wheels:
 21.4 lbs / 9.7 kg
Weight w/o Wheels:
 18.7 lbs / 8.4 kg

Colors:



Roll Out 64G.240L

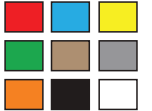
Measurements:

Width: 24 in / 595 mm
 Height: 39.4 in / 1000 mm
 Length: 29.3 in / 745 mm
Capacity: 212 lbs / 96 kg

Diameter (wheels):

7.8 in / 200 mm or
 11.8 in / 300 mm
Weight w/ Wheels:
 21.1 lbs / 14.6 kg
Weight w/o Wheels:
 28 lbs / 12.7 kg

Colors:



with heavy duty rubber wheels



Roll Out 95G.360L

Measurements:

Width: 36 in / 920 mm
 Height: 39.4 in / 1125 mm
 Length: 25.8 in / 655 mm
Capacity: 128 lbs / 58 kg

Diameter (wheels):

7.8 in / 200 mm
Weight w/ Wheels:
 21.4 lbs / 9.7 kg
Weight w/o Wheels:
 18.7 lbs / 8.4 kg

Colors:



Roll Out 26G.100L

Measurements:

Diameter (external): 36.2 in / 920 mm
 Diameter (internal): 17.3 in / 440 mm
 Height (incl. structure): 42.5 in / 1080 mm
 Length (Wheel to wheel): 42.5 in / 1080 mm

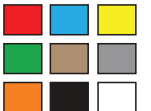
Diameter (wheels):

7.8 in / 200 mm

Capacity:

212 lbs / 96 kg

Colors:



we deliver durability



TRASH CONTAINERS

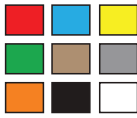


Trash Container 13G.50L

Measurements:

Width: 16.9 in / 430 mm
 Height: 29.5 in / 750 mm
 Length: 14.6 in / 550 mm
Weight: 9.2 lbs / 4.2 kg

Colors:



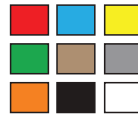
Trash Container 13G.50L

* with stand

Measurements:

Width: 14.9 in / 380 mm
 Height: 55.1 in / 1400 mm
 Length: 17.3 in / 440 mm
Weight: 13.4 lbs / 6.1 kg

Colors:



Optional: with wall-mount

Optional: with stand

SWING LID

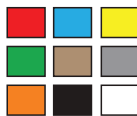


Swing Lid 16G.60L

Measurements:

Width: 14.9 in / 380 mm
 Height: 28.3 in / 720 mm
 Length: 14.9 in / 380 mm

Colors:



Interlocking System

Can be attached together



Perfect for 16G / 60L Trash bags



SWING LID



Swing Lid 26G.100L

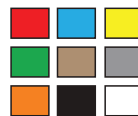
Measurements:

Width: 16.1 in / 410 mm
 Height: 41.3 in / 1050 mm
 Length: 16.1 in / 410 mm

Weight:

4.8 lbs / 2.2 kg

Colors:



we deliver sustainability

RECYCLING COLLECTION STATIONS (RCS)



RCS 2 Units - 13G.50L

Measurements: Width: 16.9 in / 430 mm
 Height: 46.8 in / 1190 mm
 Length: 35.4 in / 900 mm

Weight: 26.2 lbs / 11.9 kg

Colors:

| | | |
|--------|-------|--------|
| Red | Blue | Yellow |
| Green | Brown | Grey |
| Orange | Black | White |



RCS 3 Units - 13G.50L

Measurements: Width: 16.9 in / 430 mm
 Height: 46.8 in / 1190 mm
 Length: 35.4 in / 900 mm

Weight: 26.2 lbs / 11.9 kg

Colors:

| | | |
|--------|-------|--------|
| Red | Blue | Yellow |
| Green | Brown | Grey |
| Orange | Black | White |



RCS 4 Units - 13G.50L

Measurements: Width: 16.9 in / 430 mm
 Height: 36.6 in / 930 mm
 Length: 71.6 in / 1820 mm

Weight: 48.5 lbs / 22 kg

Colors:

| | | |
|--------|-------|--------|
| Red | Blue | Yellow |
| Green | Brown | Grey |
| Orange | Black | White |



RCS 5 Units - 13G.50L

Measurements: Width: 16.9 in / 430 mm
 Height: 36.6 in / 930 mm
 Length: 88.9 in / 2260 mm

Weight: 61.7 lbs / 28 kg

Colors:

| | | |
|--------|-------|--------|
| Red | Blue | Yellow |
| Green | Brown | Grey |
| Orange | Black | White |



RCS 6 Units - 13G.50L

Measurements: Width: 16.9 in / 430 mm
 Height: 36.6 in / 930 mm
 Length: 93.2 in / 2368 mm

Weight: 71.9 lbs / 32.6 kg

Colors:

| | | |
|--------|-------|--------|
| Red | Blue | Yellow |
| Green | Brown | Grey |
| Orange | Black | White |

we deliver solutions



RECYCLING COLLECTION STATIONS (RCS)



RCS 2 Units - 16G.60L

Measurements:
 Width: 16.9 in / 430 mm
 Height: 36.6 in / 930 mm
 Length: 31.9 in / 810 mm

Weight:
 17.4 lbs / 7.9 kg

Colors:

| | | |
|--------|-------|--------|
| Red | Blue | Yellow |
| Green | Brown | Grey |
| Orange | Black | White |

RCS 3 Units - 16G.60L

Measurements:
 Width: 16.9 in / 430 mm
 Height: 36.6 in / 930 mm
 Length: 47.2 in / 1200 mm

Weight:
 26.2 lbs / 11.9 kg

Colors:

| | | |
|--------|-------|--------|
| Red | Blue | Yellow |
| Green | Brown | Grey |
| Orange | Black | White |



RCS 4 Units - 16G.60L

Measurements:
 Width: 16.9 in / 430 mm
 Height: 36.6 in / 930 mm
 Length: 63.3 in / 1610 mm

Weight:
 32.4 lbs / 14.7 kg

Colors:

| | | |
|--------|-------|--------|
| Red | Blue | Yellow |
| Green | Brown | Grey |
| Orange | Black | White |



RCS 5 Units - 16G.60L

Measurements:
 Width: 16.9 in / 430 mm
 Height: 36.6 in / 930 mm
 Length: 82.6 in / 2100 mm

Weight:
 41.2 lbs / 18.7 kg

Colors:

| | | |
|--------|-------|--------|
| Red | Blue | Yellow |
| Green | Brown | Grey |
| Orange | Black | White |



RCS 6 Units - 16G.60L

Measurements:
 Width: 16.9 in / 430 mm
 Height: 36.6 in / 930 mm
 Length: 94.4 in / 2420 mm

Weight:
 47.8 lbs / 21.7 kg

Colors:

| | | |
|--------|-------|--------|
| Red | Blue | Yellow |
| Green | Brown | Grey |
| Orange | Black | White |

we deliver **benefits**

STEP-ON TRASH CONTAINERS



Step-On Container 26G.100L with Wheels

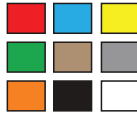
Measurements:

Width: 17 in / 425 mm
 Height: 36 in / 925 mm
 Length: 23.4 in / 595 mm

Weight:

22 lbs / 10 kg

Colors:



Step-On Container 26G.100L

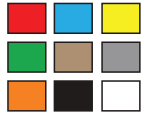
Measurements:

Width: 17 in / 425 mm
 Height: 36 in / 925 mm
 Length: 23.4 in / 595 mm

Weight:

17 lbs / 7.8 kg

Colors:



Step-On Container 13G.50L

Measurements:

Width: 9.4 in / 240 mm
 Height: 25.5 in / 650 mm
 Length: 25.5 in / 650 mm

Weight:

7.2 lbs / 3.3 kg

Colors:



Step-On Container 6G.25L

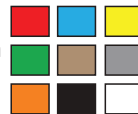
Measurements:

Width: 12.9 in / 330 mm
 Height: 23.6 in / 600 mm
 Length: 14.5 in / 370 mm

Weight:

5 lbs / 2.3 kg

Colors:



Step-On Container 4G.15L

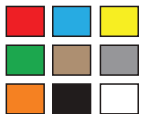
Measurements:

Width: 11 in / 280 mm
 Height: 17.3 in / 440 mm
 Length: 14.5 in / 370 mm

Weight:

3 lbs / 1.4 kg

Colors:



we deliver excellence



ROUND TRASH CONTAINERS



Round Trash Container 16G.60L

Measurements:
 Width: 17.9 in / 425 mm
 Height: 24.4 in / 620 mm
 Length: 15.7 in / 400 mm

Weight:
 3.5 lbs / 1.6 kg

Colors:



Round Trash Container with Step-On 16G.60L

Measurements:
 Width: 17.9 in / 455 mm
 Height: 28.7 in / 730 mm
 Length: 22.4 in / 570 mm

Weight:
 3.9 lbs / 1.8 kg

Colors:



Round Trash Container 26G.100L

Measurements:
 Width: 21.2 in / 540 mm
 Height: 28.3 in / 720 mm
 Length: 23.6 in / 600 mm

Weight:
 6.4 lbs / 2.9 kg

Colors:



Round Trash Container with Step-On 26G.100L

Measurements:
 Width: 21.2 in / 540 mm
 Height: 32.2 in / 820 mm
 Length: 25.5 in / 650 mm

Weight:
 11.9 lbs / 5.4 kg

Colors:



we deliver **practicality**

TRASH CONTAINERS



Swing Lid - 4G.15L

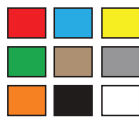
Measurements:

Diameter: 9.4 in / 240 mm
Height: 16.5 in / 420 mm

Weight:

1.3 lbs / 0.6 kg

Colors:



Flip Top - 4G.15L

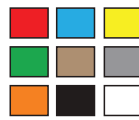
Measurements:

Diameter: 9.4 in / 240 mm
Height: 12.9 in / 330 mm

Weight:

0.6 lbs / 1.3 kg

Colors:



No Lid - 4G.15L

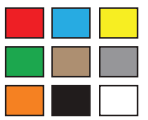
Measurements:

Diameter: 9.4 in / 240 mm
Height: 12.8 in / 325 mm

Weight:

1.1 lbs / 0.9 kg

Colors:



Swing Lid - 6G.23L

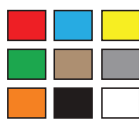
Measurements:

Diameter: 9.4 in / 240 mm
Height: 25.5 in / 650 mm

Weight:

2.4 lbs / 1.1 kg

Colors:



Flip Top - 6G.23L

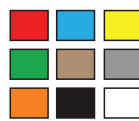
Measurements:

Diameter: 9.4 in / 240 mm
Height: 23.6 in / 600 mm

Weight:

2.4 lbs / 1.1 kg

Colors:



No Lid - 6G.23L

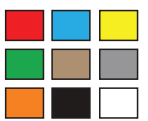
Measurements:

Diameter: 9.4 in / 240mm
Height: 22.4 in / 570mm

Weight:

1.9 lbs / 0.9 kg

Colors:



we deliver simplicity



ALC BOXES

ALC 6437



EXTERNAL DIMENSIONS: W/L/H
15.7 x 23.4 x 14.3 in
400 x 595 x 365 mm
INTERNAL DIMENSIONS: W/L/H
14.4 x 20.8 x 13.3 in
360 x 530 x 340 mm
Weight: 7.7 lbs / 3.5 kg (Wih Lids)
Capacity: 17 G / 65 L
Capacity (Load): 33 G / 15 L

Stacking (Loaded): 13.7 in / 350 mm
Stacking (Empty): 4.3 / 110 mm
Material: PP or HDPE

OPTIONAL FEATURES

- Customization
- Clear Label display
- Adjustable Organizer

KLT BOXES

RL-KLT 1518



EXTERNAL DIMENSIONS: W/L/H
5.8 x 3.8 x 3.1 in
149.5 x 99 x 80 mm
INTERNAL DIMENSIONS: W/L/H
4.8 x 2.8 x 2.9 in
122.5 x 72 x 75 mm

Weight: 0.7 lbs / 310 gr
Capacity: 0.4 G / 1.5 L
Stacking (Height): 3.4 x 3.5 in / 88 x 83 mm
Material: PP

R-KLT 2158



EXTERNAL DIMENSIONS: W/L/H
7.7 x 5.8 x 3.1 in
198 x 148 x 80 mm
INTERNAL DIMENSIONS: W/L/H
6.7 x 4.8 x 2.9 in
172x 122 x 75 mm

Weight: 0.7 lbs / 310 gr (Wih Lids)
Capacity: 0.4 G / 1.5 L
Stacking (Height): 3.4 x 3.2 in / 88 x 83 mm
Material: PP

RL-KLT 3147



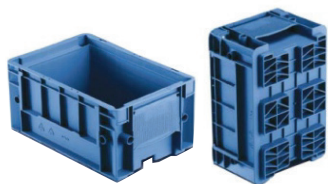
EXTERNAL DIMENSIONS: W/L/H
7.8 x 11.6 x 5.9 in
200 x 295 x 150 mm
INTERNAL DIMENSIONS: W/L/H
6.4 x 9.6 x 5.1 in
165 x 245 x 130 mm
Weight: 0.7 lbs / 310 gr (Wih Lids)
Capacity: 1.3 G / 5.2 L
Capacity (Load): 33 G / 15 L

Stacking (Loaded): 5.9 x 5.3 in / 150 x 135 mm
Material: PP

OPTIONAL FEATURES

- Customization
- Lid
- Adjustable Organizer

R-KLT 3215



EXTERNAL DIMENSIONS: W/L/H
7.8 x 11.6 x 5.9 in
200 x 295 x 150 mm
INTERNAL DIMENSIONS: W/L/H
6.6 x 9.6 x 4.3 in
170 x 245 x 110 mm
Weight: 1.8 lbs / 0.84 kg
Capacity: 101 G / 405 L
Capacity (Load): 44 lbs / 20 L

Stacking (Loaded): 5.9 x 5.3 in / 150 x 150 mm
Material: PP

OPTIONAL FEATURES

- Customization
- Lid
- Adjustable Organizer

we deliver reliability

KLT BOXES

R-KLT 4315



EXTERNAL DIMENSIONS: W/L/H

11.6 x 15.5 x 5.7 in
295 x 395 x 145 mm

INTERNAL DIMENSIONS: W/L/H

10.6 x 13.7 x 4.3 in
270 x 350 x 110 mm

Weight: 2.9 lbs / 1.3 kg

Capacity: 2.6 G / 10 L

Capacity (Load): 44 lbs / 20 Kg

Stacking (Loaded): 5.9 x 5.3 in / 150 x 135t mm

Material: PP

OPTIONAL FEATURES

- Customization
- Lid
- Adjustable Organizer

RL-KLT 4315



EXTERNAL DIMENSIONS: W/L/H

11.63 x 15.5 x 5.7 in
295 x 395 x 145 mm

INTERNAL DIMENSIONS: W/L/H

10.32 x 13.5 x 5.1 in
260 x 345 x 130 mm

Weight: 2.6 lbs / 1.2 kg

Capacity: 3 G / 11.7 L

Capacity (Load): 33 lbs / 15 Kg

Stacking (Loaded): 5.7 x 5.1 in / 145 x 130 mm

Material: PP

OPTIONAL FEATURES

- Customization
- Lid
- Adjustable Organizer

RL-KLT 4322



EXTERNAL DIMENSIONS: W/L/H

11.6 x 15.5 x 8.4 in
295 x 395 x 215 mm

INTERNAL DIMENSIONS: W/L/H

10.2 x 14.1 x 7.6 in
260 x 360 x 195 mm

Weight: 2.9 lbs / 1.3 kg

Capacity: 4.7 G / 18 L

Capacity (Load): 33 lbs / 15 Kg

Stacking (Loaded): 8.4 x 7.8 in / 215 x 200 mm

Material: PP

OPTIONAL FEATURES

- Customization
- Lid
- Label holder in PP
- Adjustable Organizer

R-KLT 4329



EXTERNAL DIMENSIONS: W/L/H

11.6 x 15.5 x 11 in
295 x 395 x 280 mm

INTERNAL DIMENSIONS: W/L/H

10.6 x 13.7 x 9.4 in
270 x 350 x 240 mm

Weight: 4.3 lbs / 1.98 kg

Capacity: 5.9 G / 22.7 L

Capacity (Load): 44 lbs / 20 Kg

Stacking (Loaded): 11 x 10.4 in / 280 x 265 mm

Material: PP

OPTIONAL FEATURES

- Customization
- Lid
- Adjustable Organizer

RL-KLT 6421



EXTERNAL DIMENSIONS: W/L/H

15.5 x 23.4 x 8.4 in
395 x 595 x 215 mm

INTERNAL DIMENSIONS: W/L/H

14.1 x 22 x 7.6 in
360 x 560 x 195 mm

Weight: 4.8 lbs / 2.2 kg

Capacity: 10.3 G / 39 L

Capacity (Load): 33 lbs / 15 Kg

Stacking (Loaded): 2 x 7.8 in / 415 x 200 mm

Material: PP

OPTIONAL FEATURES

- Customization
- Lid
- Label display on PP
- Adjustable Organizer

we deliver performance



XLT BOXES

R-KLT 6424

**EXTERNAL DIMENSIONS: W/L/H**

15.5 x 23.4 x 9.4 in
395 x 595 x 240 mm

INTERNAL DIMENSIONS: W/L/H

14.1 x 22 x 7.6 in
360 x 560 x 195 mm

Weight: 5.4 lbs / 2.49 kg

Capacity: 10.3 G / 39 L

Capacity (Load): 44 lbs / 20 kg

Stacking (Loaded): 9.4 x 8.8 in / 240 x 225 mm

Material: PP

OPTIONAL FEATURES

- Customization
- Lid
- Label display on PP
- Adjustable Organizer

R-KLT 6428

**EXTERNAL DIMENSIONS: W/L/H**

15.5 x 23.2 x 11 in
395 x 590 x 280 mm

INTERNAL DIMENSIONS: W/L/H

14.1 x 21.6 x 9.4 in
360 x 550 x 240 mm

Weight: 7.16 lbs / 3.25 Kg

Capacity: 12.5 G / 47.5 L

Capacity (Load): 44 lbs / 20 Kg

Stacking (Loaded): 11 x 10.4 in / 280 x 265 mm

Material: PP

OPTIONAL FEATURES

- Customization
- Lid
- Adjustable Organizer

RL-KLT 6431

**EXTERNAL DIMENSIONS: W/L/H**

15.5 x 23.4 x 12.2 in
395 x 595 x 310 mm

INTERNAL DIMENSIONS: W/L/H

14.1 x 22 x 12.2 in
360 x 560 x 290 mm

Weight: 6.6 lbs / 2.9 kg

Capacity: 15.4 G / 58.5 L

Capacity (Load): 33 lbs / 15 kg

Stacking (Loaded): 12.2 x 11.6 in / 310 x 295 mm

Material: PP

OPTIONAL FEATURES

- Customization
- Lid
- Label display on PP
- Adjustable Organizer

RL-KLT 6435

**EXTERNAL DIMENSIONS: W/L/H**

15.5 x 23.2 x 3.7 in
395 x 590 x 350 mm

INTERNAL DIMENSIONS: W/L/H

14.1 x 22 x 12.7 in
360 x 560 x 325 mm

Weight: 7.7 lbs / 3.5 kg

Capacity: 17.1 G / 65 L

Capacity (Load): 33 lbs / 15 kg

Stacking (Loaded): 13.7 x 13 in / 310 x 295 mm

Material: PP

OPTIONAL FEATURES

- Customization
- Lid
- Label display on PP
- Adjustable Organizer

R-KLT 10428

**EXTERNAL DIMENSIONS: W/L/H**

15.6 x 39.3 x 10.8 in
370 x 970 x 235 mm

INTERNAL DIMENSIONS: W/L/H

10.8 x 38.1 x 9.2 in
370 x 970 x 235 mm

Weight: 9.9 lbs / 4.5 kg

Capacity: 22.1 G / 84 L

Capacity (Load): 44 lbs / 20 kg

Stacking (Loaded): 10.8 x 10.2 in / 275 x 260 mm

Material: PP

OPTIONAL FEATURES

- Customization
- Adjustable Organizer

we deliver toughness

XLT BOXES

GALIA BOX 1322



WITH HANDLE



EXTERNAL DIMENSIONS: W/L/H

11.5 x 38.9 x 8.2 in
295 x 990 x 210 mm

INTERNAL DIMENSIONS: W/L/H

8.8 x 37.4 x 7.6 in
255 x 950 x 195 mm

Weight: 6.6 lbs / 3 kg

Capacity: 12.4 G / 47 L

Capacity (Load): 33 lbs / 15 kg

Stacking (Loaded): 10.8 x 10.2 in / 275 x 260 mm
Material: PP

OPTIONAL FEATURES

- Handle
- Customizable
- Label display in PP
- Adjustable Organizer

GALIA BOX 298353



EXTERNAL DIMENSIONS: W/L/H

12.9 x 33.8 x 21.6 in
330 x 860 x 550 mm

INTERNAL DIMENSIONS: W/L/H

11.4 x 32.5 x 20.7 in
290 x 826 x 528 mm

Weight: 12.1 lbs / 5.5 kg

Capacity: 33.4 G / 126.5 L

Capacity (Load): 44 lbs / 20 kg

Stacking (Loaded): 21.6 x 21 in / 550 x 535 mm
Material: PP

OPTIONAL FEATURES

- Customization
- Adjustable Organizer

STRAIGHT WALL MODULAR CONTAINERS WITH LIDS

STACK ORGANIZER 1G.4L



EXTERNAL DIMENSIONS: W/L/H

6.4 x 12.5 x 6.1 in
165 x 320 x 155 mm

INTERNAL DIMENSIONS: W/L/H

5.3 x 11.2 x 4.5 in
135 x 285 x 115 mm

Weight: 0.9 lbs / 0.4 kg

Capacity: 4.2 G / 1.1 L

Material: PP

OPTIONAL FEATURES

- Lid

STACK ORGANIZER 2G.7L



EXTERNAL DIMENSIONS: W/L/H

11.8 x 16.7 x 2.9 in
300 x 425 x 75 mm

INTERNAL DIMENSIONS: W/L/H

10.4 x 14.3 x 2.7 in
265 x 365 x 70 mm

Weight: 0.7 lbs / 1.5 kg

Capacity: 1.8 G / 7 L

Material: PP

OPTIONAL FEATURES

- Lid

STACK ORGANIZER 4G.15L



EXTERNAL DIMENSIONS: W/L/H

13.8 x 17.3 x 5.9 in
352 x 441 x 150 mm

INTERNAL DIMENSIONS: W/L/H

11.6 x 14.3 x 5.5 in
295 x 365 x 140 mm

Weight: 2.6 lbs / 1.2 kg

Capacity: 3.9 G / 15 L

Material: PP

OPTIONAL FEATURES

- Customizable
- Lid



STRAIGHT WALL MODULAR CONTAINERS WITH LIDS

STACK ORGANIZER 7G.26L



EXTERNAL DIMENSIONS: W/L/H
13.9 x 19.2 x 8.8 in
355 x 490 x 225 mm

INTERNAL DIMENSIONS: W/L/H
12.4 x 16.1 x 8.6 in
315 x 410 x 220 mm

Weight: 4.4 lbs / 2 kg
Capacity: 6.8 G / 26 L

Material: PP OR HDPE

OPTIONAL FEATURES

- Customizable
- Lid

STACK ORGANIZER 10G.36L



EXTERNAL DIMENSIONS: W/L/H
15.7 x 24.4 x 8.4 in
400 x 620 x 215 mm

INTERNAL DIMENSIONS: W/L/H
14.7 x 21.8 x 8.2 in
375 x 555 x 210 mm

Weight: 5.5 lbs / 2.5 kg
Capacity: 9.5 G / 36 L

Material: PP OR HDPE

OPTIONAL FEATURES

- Customizable
- Lid

STACK ORGANIZER 16G.61L



EXTERNAL DIMENSIONS: W/L/H
15.3 x 24 x 12.5 in
390 x 610 x 320 mm

INTERNAL DIMENSIONS: W/L/H
14 x 21.8 x 12.2 in
357 x 555 x 310 mm

Weight: 6.6 lbs / 3 kg
Capacity: 16 G / 61 L

Material: PP OR HDPE

OPTIONAL FEATURES

- Customizable
- Lid

STACK ORGANIZER 35G.130L



EXTERNAL DIMENSIONS: W/L/H
23 x 31.8 x 18.7 in
585 x 810 x 475 mm

INTERNAL DIMENSIONS: W/L/H
20 x 30.5 x 16.9 in
510 x 775 x 430 mm

Weight: 12.1 lbs / 5.5 kg
Capacity: 34.3 G / 130 L

Material: PP OR HDPE

OPTIONAL FEATURES

- Customizable
- Lid

STACK ORGANIZER 45G.180L



EXTERNAL DIMENSIONS: W/L/H
22.4 x 35.4 x 20 in
570 x 900 x 510 mm

INTERNAL DIMENSIONS: W/L/H
20 x 31.8 x 18.7 in
510 x 810 x 475 mm

Weight: 19.1 lbs / 8.7 kg
Weight with cart: 41.4 lbs / 18.8 kg
Capacity: 47.5 G / 180 L

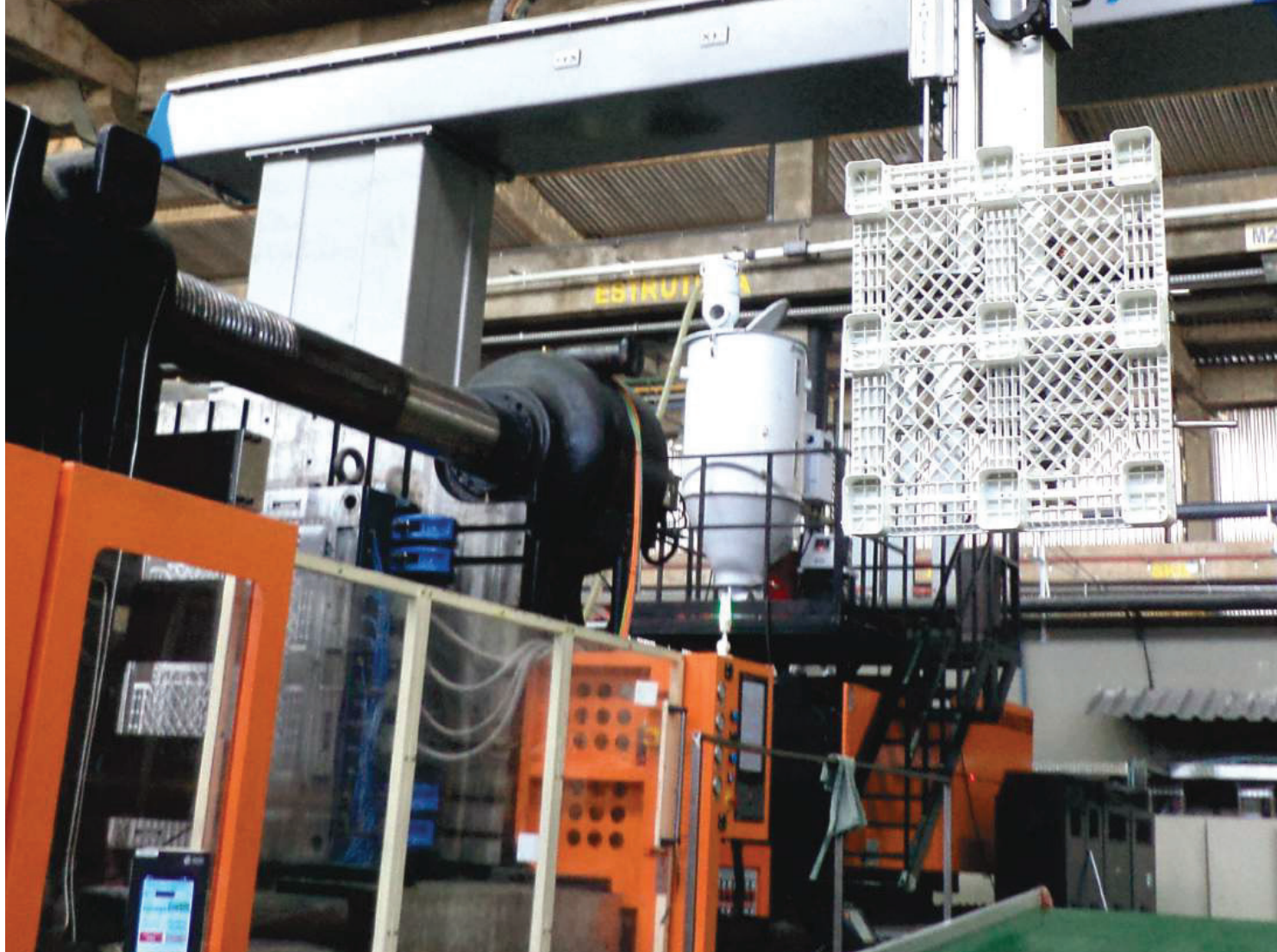
Material: PP OR HDPE

OPTIONAL FEATURES

- Customizable
- Lid
- Cart



we deliver partnership



STRUCTURE and EQUIPMENT

Our R&D and Quality departments constantly bring innovative solutions to meet our customers' demands. We develop new customized products based on circular economy concept using post-industrial materials.

Our small and large tonnage equipment blueprint, on both injection molding and extrusion, runs 24/7 allowing us to satisfy high volume market needs.

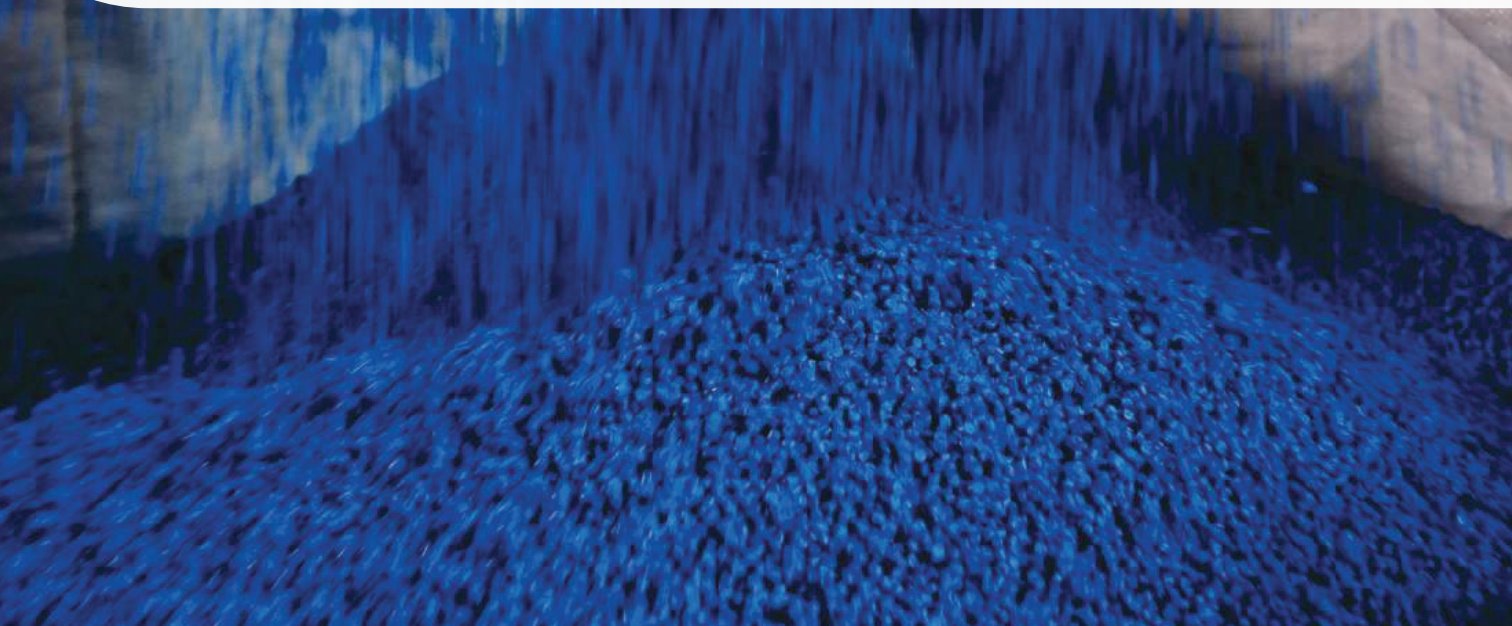




OUR VISION of the WORLD

LAR Plastics is making the difference, we transform post-industrial and post-consumer materials from various industries into an array of products, leaving our mark, contributing for a better future for our Planet.

Recycling the present, preserving the future.





LAR PLASTICS

**Recycling the present,
preserving the future.**

info@larplastics.com

www.larplastics.com